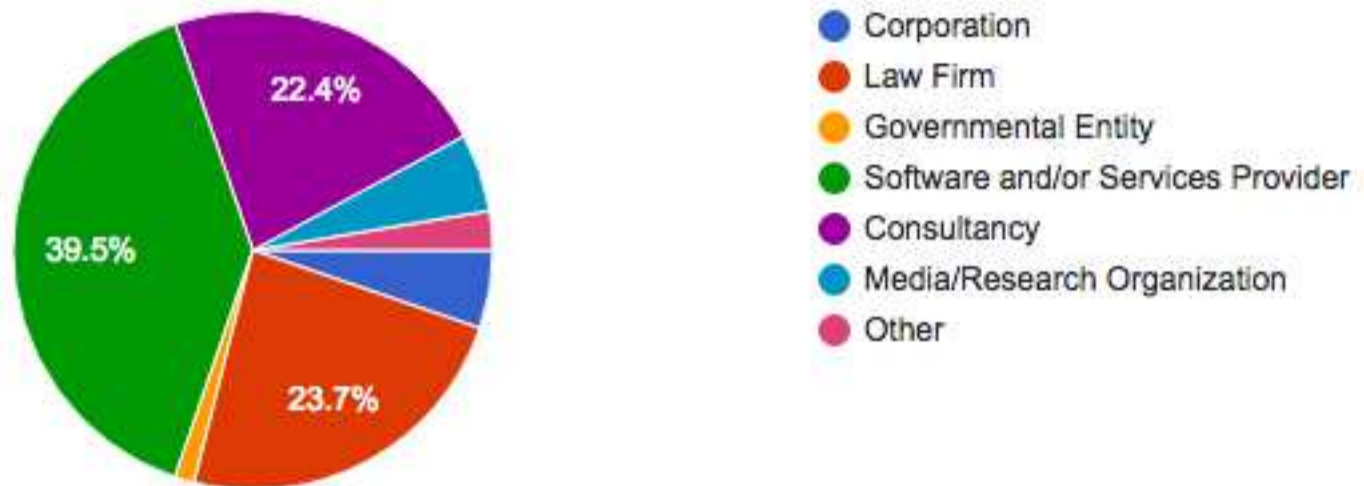


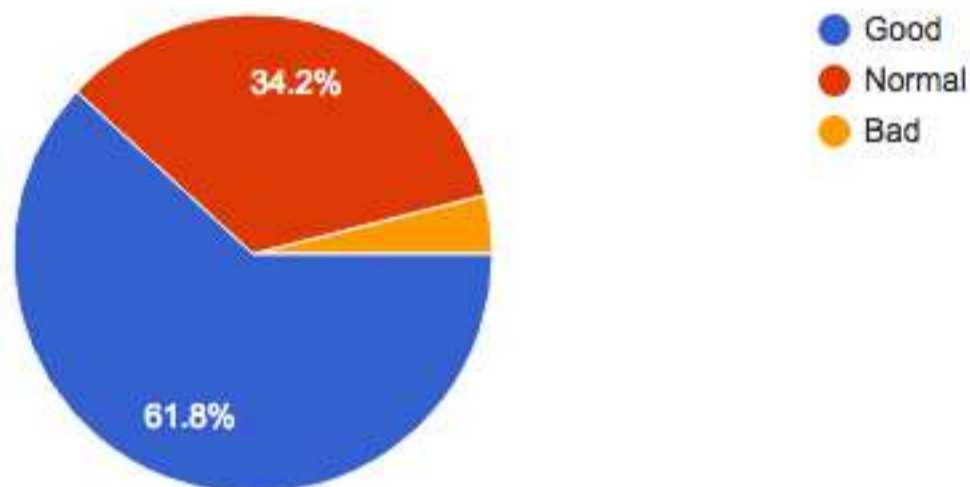
## Which of the following segments best describes your business in eDiscovery?

(76 responses)



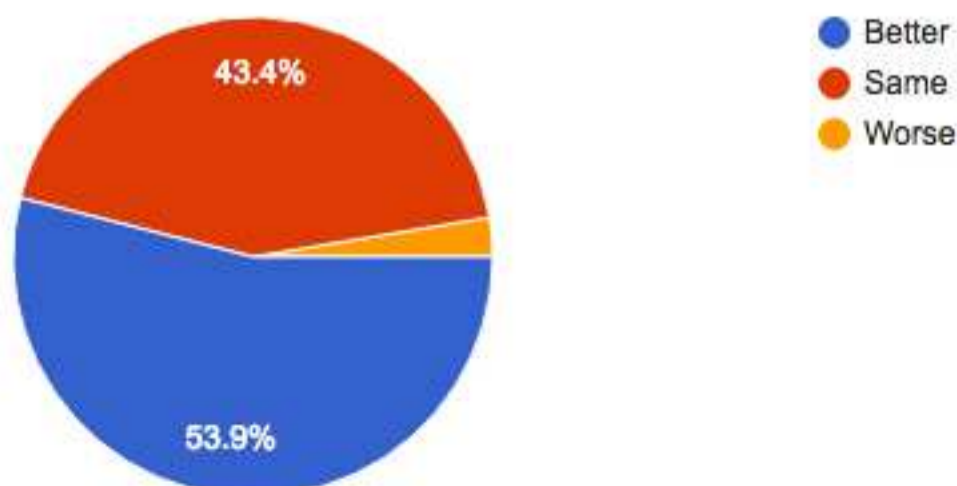
## How would you rate the current general business conditions for eDiscovery in your segment?

(76 responses)



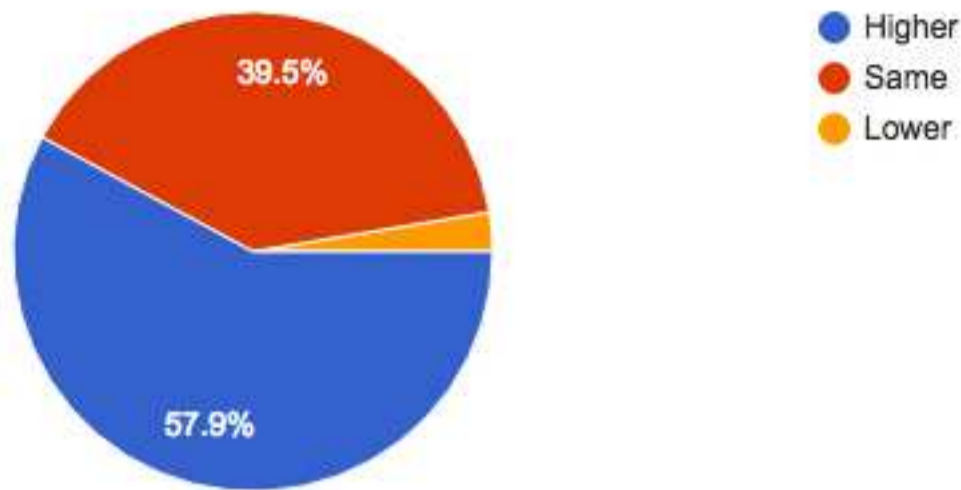
## How do you think the business conditions will be in your segment six months from now?

(76 responses)



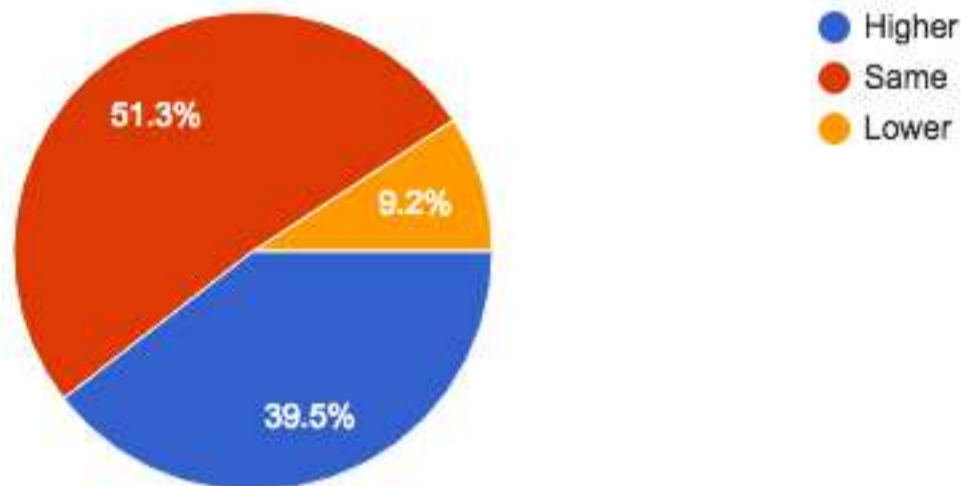
How would you guess revenue in your segment of the eDiscovery ecosystem will be six months from now?

(76 responses)



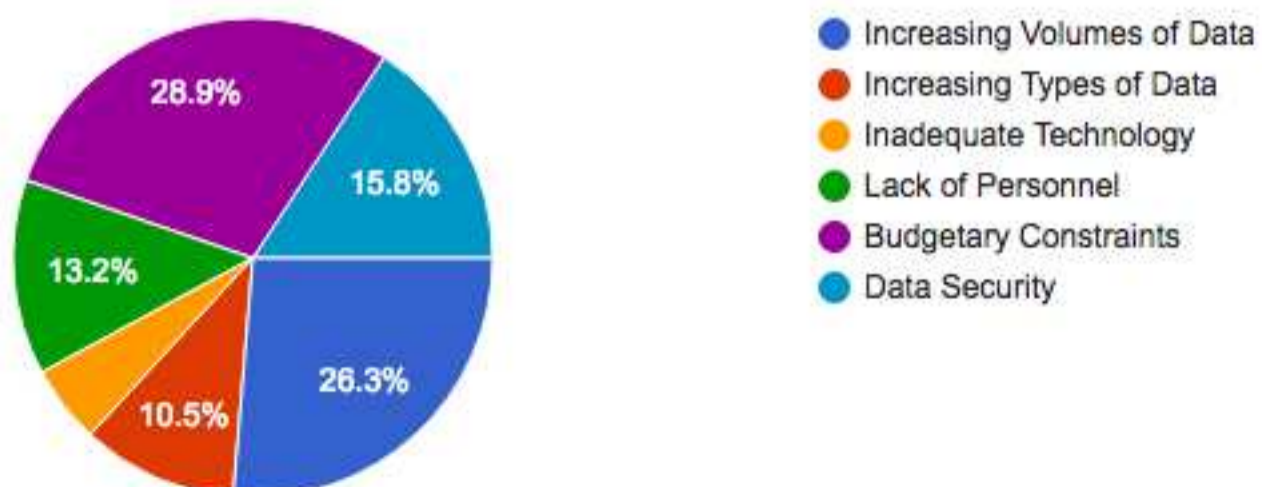
How would you guess profits in your segment of the eDiscovery ecosystem will be six months from now?

(76 responses)



Of the six items presented below, what is the issue that you feel will most impact the business of eDiscovery over the next six months?

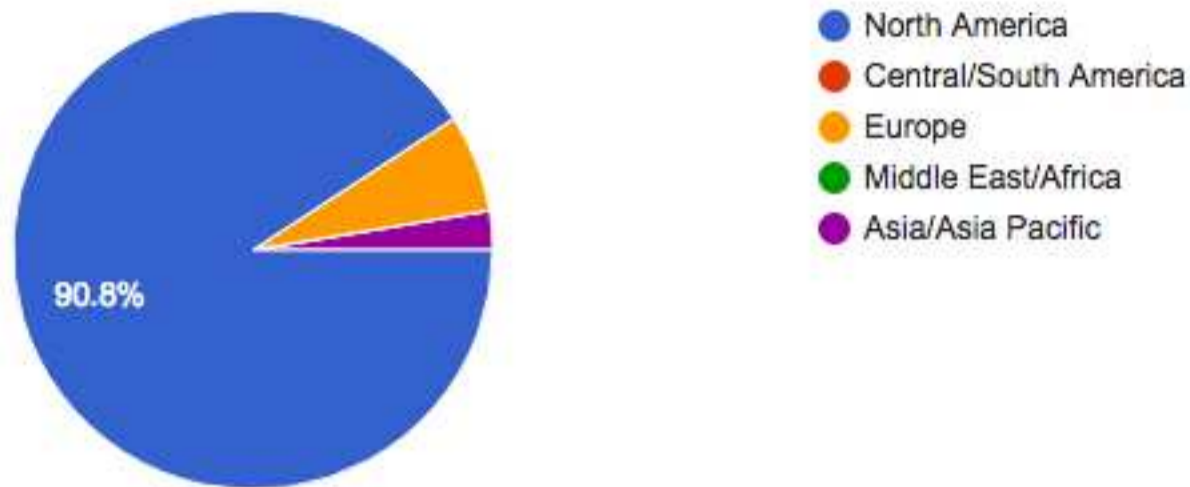
(76 responses)





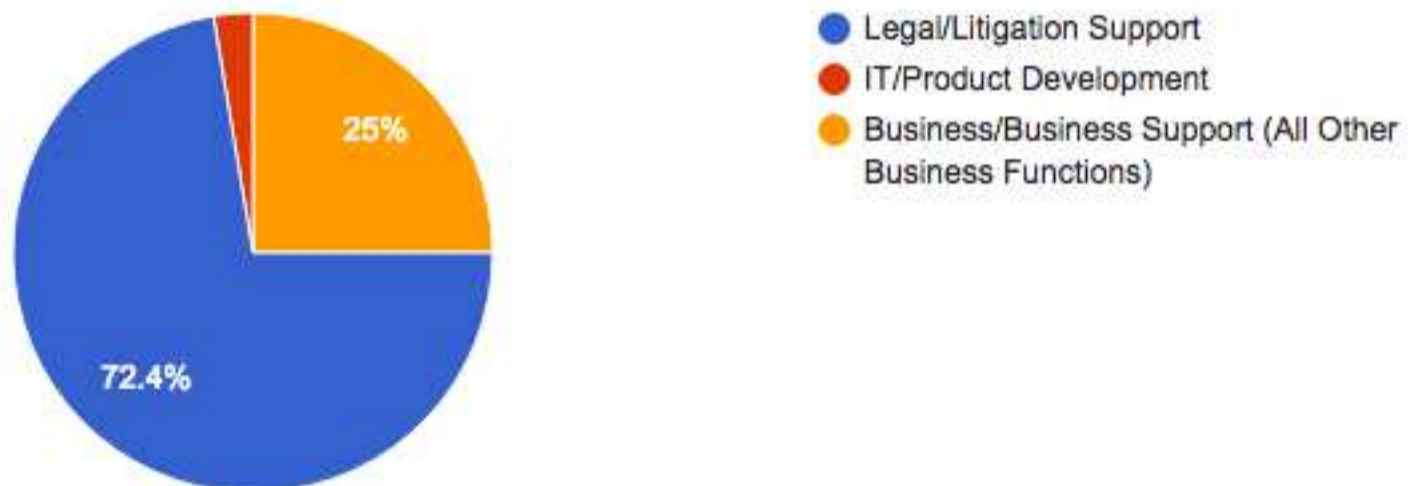
## In which geographical region do you primarily conduct eDiscovery-related business?

(76 responses)



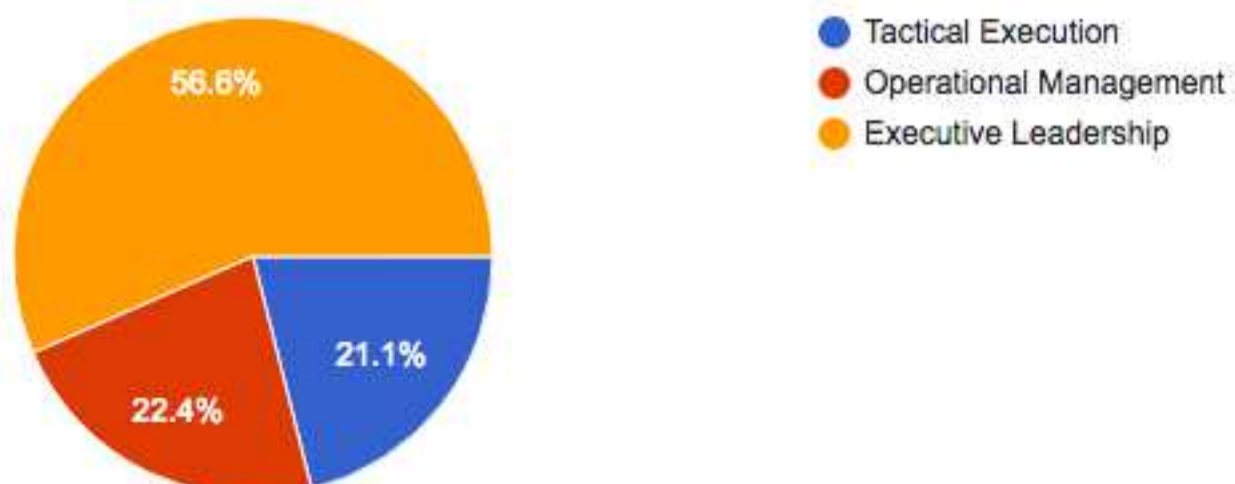
## What area best describes your primary function in the conduct of your organization's eDiscovery-related business?

(76 responses)



## What area best describes your level of support in the conduct of your organization's eDiscovery-related business?

(76 responses)



# eDiscovery Business Confidence Survey

---

Please complete all questions below to have your business confidence level included in the Spring 2016 survey.

---

## Which of the following segments best describes your business in eDiscovery? \*

Part of the eDiscovery ecosystem where your organization resides.

- Corporation
- Law Firm
- Governmental Entity
- Software and/or Services Provider
- Consultancy
- Media/Research Organization
- Other...

## How would you rate the current general business conditions for eDiscovery in your segment? \*

Subjective feeling of business performance when compared with business expectations.

- Good
- Normal
- Bad

## How do you think the business conditions will be in your segment six months from now? \*

Subjective feeling of business performance when compared with business expectations.

- Better
- Same
- Worse

**How would you guess revenue in your segment of the eDiscovery ecosystem will be six months from now?** \*

Revenue is the income generated from eDiscovery-related business activities.

- Higher
- Same
- Lower

**How would you guess profits in your segment of the eDiscovery ecosystem will be six months from now?** \*

Profit is the amount of income remaining after accounting for all expenses, debts, additional revenue streams, and operating costs.

- Higher
- Same
- Lower

**Of the six items presented below, what is the issue that you feel will most impact the business of eDiscovery over the next six months?** \*

Challenges that may directly impact the business performance of your organization.

- Increasing Volumes of Data
- Increasing Types of Data
- Inadequate Technology
- Lack of Personnel
- Budgetary Constraints
- Data Security



## In which geographical region do you primarily conduct eDiscovery-related business? \*

The location from which you are basing your business assessments.

- North America
- Central/South America
- Europe
- Middle East/Africa
- Asia/Asia Pacific

## What area best describes your primary function in the conduct of your organization's eDiscovery-related business? \*

- Legal/Litigation Support
- IT/Product Development
- Business/Business Support (All Other Business Functions)

## What area best describes your level of support in the conduct of your organization's eDiscovery-related business? \*

- Tactical Execution
- Operational Management
- Executive Leadership